



KR10 Scarifier

No matter how you "kut" it, the Kut-Rite KR10 Scarifier is a picture of innovation. With 300 pounds of centrally located quality engineering, the KR10 will not jump out of the cut. Consider the KR10 scarifier for heavy duty surface preparation, heavy removal of concrete, asphalt, thermo-plastic lines, paints, coatings, trowel marks, curled joints, sidewalk trip hazards, etc.

Features & Benefits

Extra-heavy construction for added stability and ballast.

Zero-depth height adjustment.

Drum centrally located under the motor for better balance and less vibration.

Side access drum assembly for quick and easy cutter changes.

Swiveling vacuum hook-up for virtually dust-free operation.

Compact design.

Laser cut front-mounted lifting handles make loading and unloading easy.

Tethered emergency pull cord for immediate motor shut off.

Heavy-duty hex shaft, sealed bearings and toothed belt.

www.kutritemfg.com

KR10 Scarifier



Steel

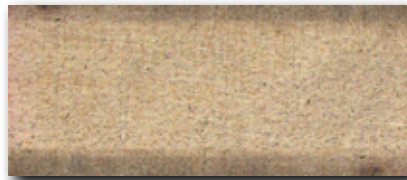
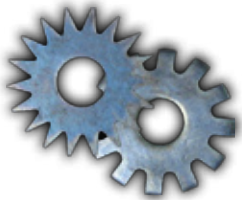


Result



Description

With the weight of the KR10 the steel cutter is an excellent choice for preparation and/or removal of various surface materials such as: carpet foam backing, adhesives, mastics, glues, chewing gum, some thin mil coatings and clean up after carbide tip cutters.



Carbide (TCT)

Result

Description

Equip the KR10 with our standard carbide tip cutters for grinding, leveling, grooving, cleaning and general surface preparation. The standard carbide tip cutter is a very aggressive cutter designed for removing material such as: pavement markings, epoxy coatings and waterproofing membranes.



Full Face™

Result

Description

The Full Face™ carbide tip cutter is ideal for removing pavement markings, epoxy, paint, adhesives, mastics, etc. The Full Face™ provides 100% removal of surface material with minimal damage to the substrate. The Full Face™ cutter also works extremely well for pavement marking inlays.



Milling

Result

Description

Utilize the milling cutter for removing thick and soft materials such as: mastic, thermo-plastic, waterproofing membranes, cold plastic coatings, glues, etc... It leaves the surface smooth and ready for preparation. Often used to remove bulk material prior to a carbide tip cutter.



Models	HP	Power Source	Power Specs	Weight	Production sq ft
KR10G9	9	Gas	Honda 9HP	266lbs	450-600/hr
KR10G11	11	Gas	Honda 11HP	279lbs	450-600/hr
KR10E5	5	Electric	240/480 1/3PH 13/6FLA	306lbs	450-600/hr

All weights can vary based on cutter selection



Kut-Rite
27482 Northline Rd.
Romulus, MI 48174

www.kutritemfg.com

P:734.955.9311
P:877.786.5067 - Toll Free
F:734.955.9314